

Technical sheet :

ATJ 46 E

OXYGEN



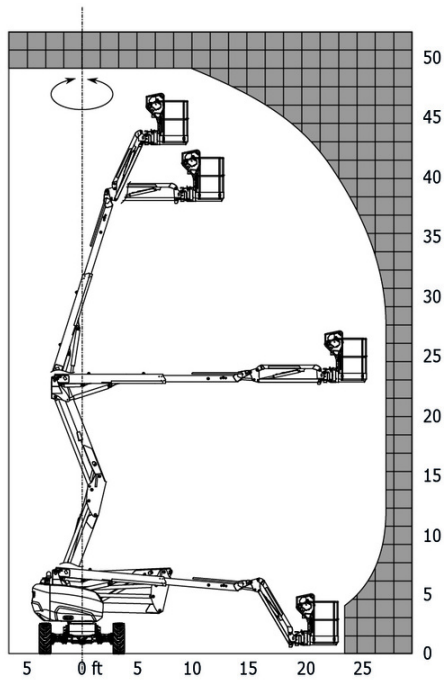
 **MANITOU**
HANDLING YOUR WORLD

Capacities		Imperial
Working height	h21	52 ft 7 in
Platform height	h7	46 ft
Maximum outreach		26 ft 7 in
Overhang		24 ft 5 in
Pendular arm rotation (left / right)		90 ° / 90 °
Pendular arm rotation (top / bottom)		+65 ° / -59.50 °
Platform capacity	Q	551 lb
Turret rotation		350 °
Platform rotation (right / left)		90 ° / 90 °
Number of people (indoor / outdoor)		2 / 2
Weight and dimensions		
Platform weight*		13713 lb
Platform dimensions (length x width)	lp / ep	6 ft 11 in x 2 ft 6 in
Floor height (access)	h20	1 ft 6 in
Overall length	l1	21 ft 4 in
Overall width	b1	7 ft 7 in
Overall height	h17	7 ft 10 in
Overall length (stowed)	l9	14 ft 8 in
Overall height (stowed)	h18 ***	9 ft 1 in
Counterweight offset (turret at 90°)	a7	2 ft 9 in
Counterweight Oversize / Reach		10 in
External turning radius	Wa3	12 ft 4 in
Ground clearance at centre of wheelbase	m2	1 ft 2 in
Wheelbase	y	7 ft 7 in
Performances		
Drive speed - stowed		3 mph
Drive speed - raised		0.43 mph
Gradeability		45 %
Permissible leveling		5 °
Wheels		
Tires type		Foam-filled
Standard tires		834 x 298 mm
Drive wheels (front / rear)		2 / 2
Steering wheels (front / rear)		2 / 2
Braking wheels (front / rear)		0 / 2
Engine/Battery		
Battery voltage		48 V
Battery nominal voltage / capacity		48 V / 480 Ah
Battery energy		23 kW/h
On-board charger (V / A)		48 V / 60 A
Miscellaneous		
Number of cycles with STD Battery (HIRD)		58
Ground Pressure		189 PSI
Hydraulic Pressure		3481 PSI
Hydraulic tank capacity		6 US gal
Sound pressure level (platform work station) (LpA)		70 dB
Vibration on hands/arms		< 8 ft/s²
Standards compliance		
This machine is in compliance with:		ANSI A92.20-2018 CSA B354.6 ICES-002-Issue 6 Standard Canadian EMC

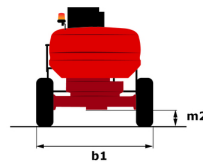
*Varies according to options and standards of the country to which the machine is delivered
 ** According to "REDUCE cycle"

ATJ 46 e - Load chart

Load Chart for MEWP (Imperial)



ATJ 46 e - Dimensional drawing



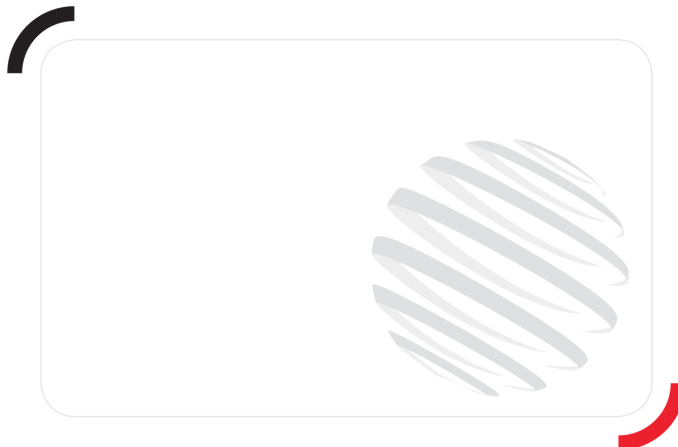
Equipment

Standard

110 V American plug with differential circuit breaker
 4 simultaneous movements
 4 wheel drive
 4 wheel steer with crab mode
 Audible alarm and illuminated indicator lamp (leveling, overload, lowering)
 Backup electrical pump
 CAN bus technology
 Cumulative lifting and driving functions
 Dead man pedal
 Differential locking on rear axle
 Easy Manager
 Emergency stop button in platform and on frame
 Front axle with limited slip
 Fully galvanized basket with removable floor
 Galvanized basket 2.100 mm / 6'11" with lateral door
 Hom in the platform
 Hour meter
 LED rotating beacon
 Large color screen on turret
 Leveling unlocking
 Load sensing pump
 Oscillating front axle
 Reserve mode
 Screen information in the basket
 Secondary Protection System (SPS)
 Simplified lifting system without spreader bar
 Slings and securing rings
 Steer and rotate
 Turret orientation information

Optional

110v Canadian plug In basket with 3 differential circuit breaker
 Biodegradable hydraulic oil - Grade 32
 Bottom screen protection
 Digicode anti-theft device
 Easy Link - With access control keypad
 Easy link with remote lock
 Electric centralized filling
 Engine compartment with key lock
 External pneumatic supply source
 Foam-filled tires 914 x 381 mm / 36X15D610
 Fully galvanized basket 1800mm / 5'11" with lateral door
 Iron wheel package
 Lighting pack
 Non-marking Foam Inflated Tires 914 x 381 mm / 36x15D610
 OSS - Operation Safety System
 Personalized paintwork
 Water predisposition

**Head Office**

B.P. 249 - 430 rue de l'Aubinière

44150 Ancenis Cedex - France

Tel: +33 (0)2 40 09 10 11 - Fax: +33 (0)2 40 09 10 97

www.manitou.com

This publication provides a description of the configuration versions and options for Manitou products, which may differ for equipment. The equipment presented in this brochure may be part of a series, as an option, or it may not be available, depending on the versions. Manitou reserves the right, at any time and without notice, to amend the specifications described and represented. The specifications provided do not bind the manufacturer. For more details, please contact your Manitou agent. This is not a contractually binding document. The presentation of the products is not contractually binding. List of specifications non-exhaustive. The logos as well as the visual identity of the company are owned by Manitou and cannot be used without authorisation. All rights reserved. The photos and diagrams contained in this brochure are only provided for consultation and information purposes.

MANITOU BF SA - Limited company with board of directors - Share capital: 39,668,399 euros - 857 802 508 RCS Nantes